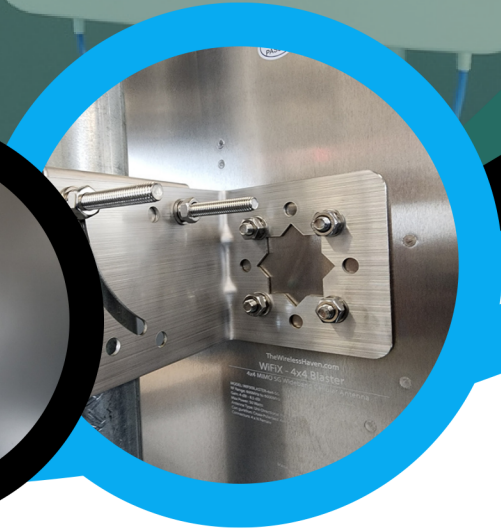


WIFIX ANTENNAS - 4G 5G

WIFIX 4X4 BLASTER



SKU: WIFIXBLASTER-4X4-5G

- ✓ 600MHz - 6000MHz Ultra Wideband Coverage
- ✓ 4x4 MIMO Cross Polarized arrangement
- ✓ All cell carrier, worldwide support
- ✓ UV Stabilized ABS Plastic housing and solid metal backplane.
- ✓ Stainless Steel Mounting Hardware Included
- ✓ 3 Year Warranty against manufacturer defects and workmanship
- ✓ 4 Type N Female Connectors
- ✓ Can be used for WiFi dual band antenna use



CONTACT US

info@thewirelessshaven.com

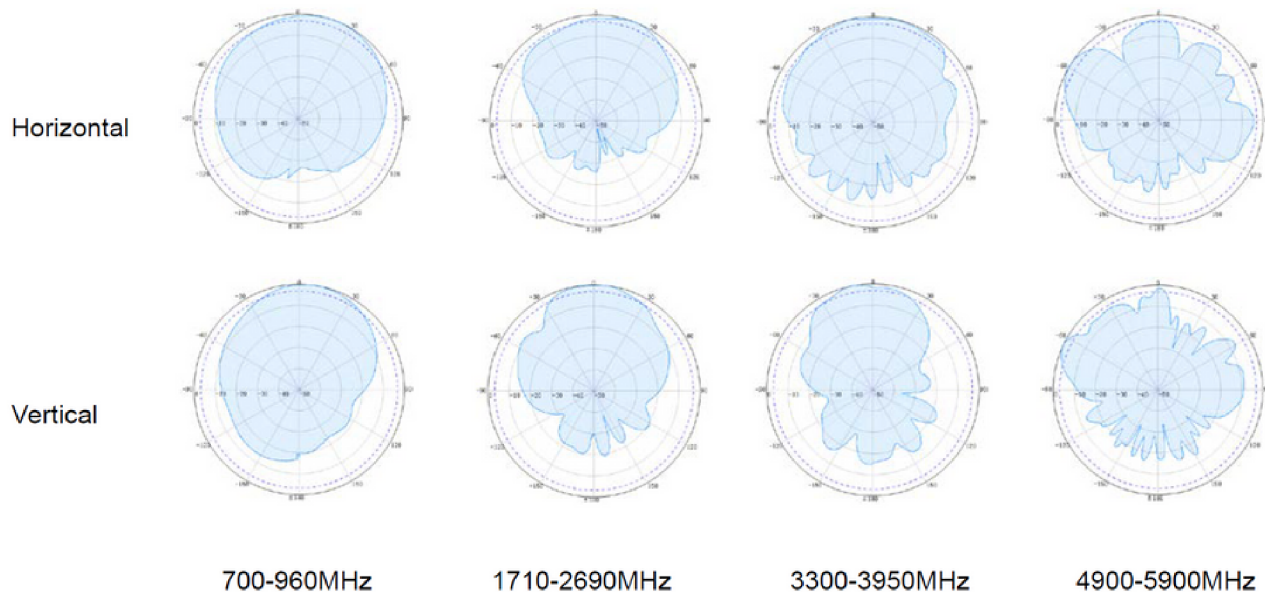


PRODUCT LINK

thewirelessshaven.com/4x4-blaster



Electrical Specifications					
Frequency Range(MHz)	600-698	698-960	1710-2700	3300-4000	4000-6000
Gain(dBi)	4.0	5.5	8.5	7.0	6.0
VSWR	≤2.5	≤2.5	≤2.0	≤2.0	≤2.0
Polarization	Horizontal + Vertical				
Isolation(dB)	≥10	≥12	≥20	≥24	≥24
Front to Back Ratio(dB)	≥6	≥7	≥13	≥10	≥10
PIM, 3rd Order, 2x20W(dBc)	≤-140	≤-140 -150 -153			
Horizontal Beam width	73°	83°	59°	36°	19°
Vertical Beam width	61°	68°	53°	33°	18°
Input Impedance	50 Ω				
Max. Input Power	50 W				
Mechanical Specifications					
Connector	4xN				
Dimensions(mm)	393x317x80				
Weight(lb)	3.3				
Radome Material	ABS (UV Stabilized)				
Operating Temperature	-40°C to +65°C				
Mounting	Wall Mount Pole Mount				





THEWIRELESSHAVEN.COM

SKU: WIFIXBLASTER-4X4-5G

